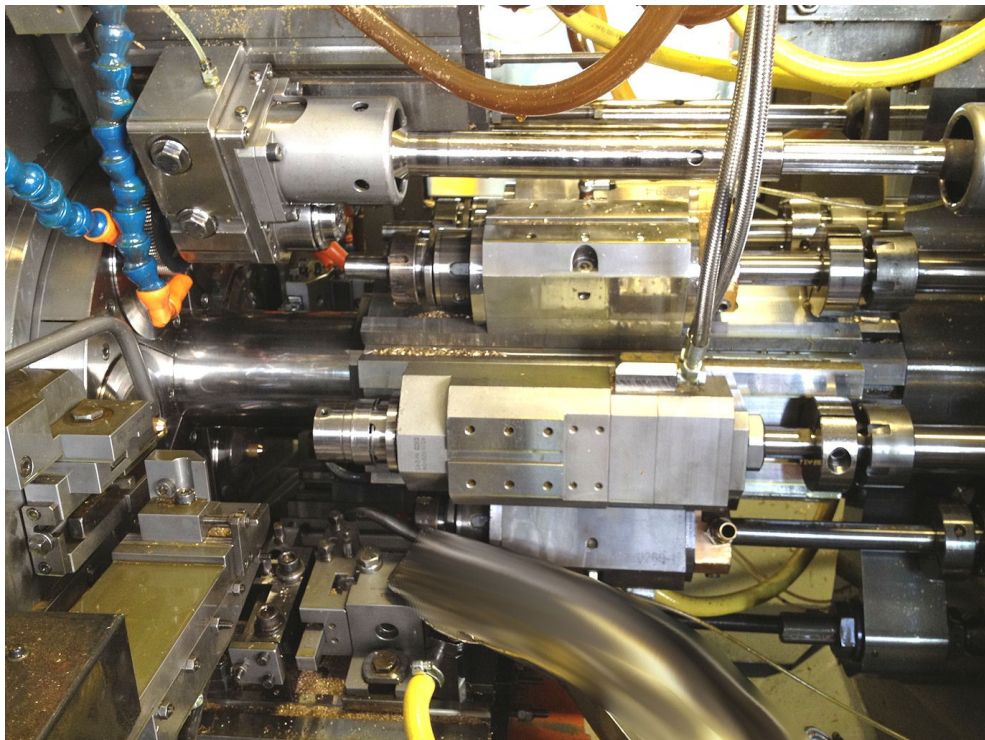




TURLO S.r.l.
Via Monte Rosa 5
13019 VARALLO SESIA (VC) ITALY
Tel (0039) 0163 54446
Fax (0039) 0163 54226
Email: mail@turlo.it website: www.turlo.it

SPARE PARTS AND ATTACHMENT FOR MULTISPINDLE MACHINES



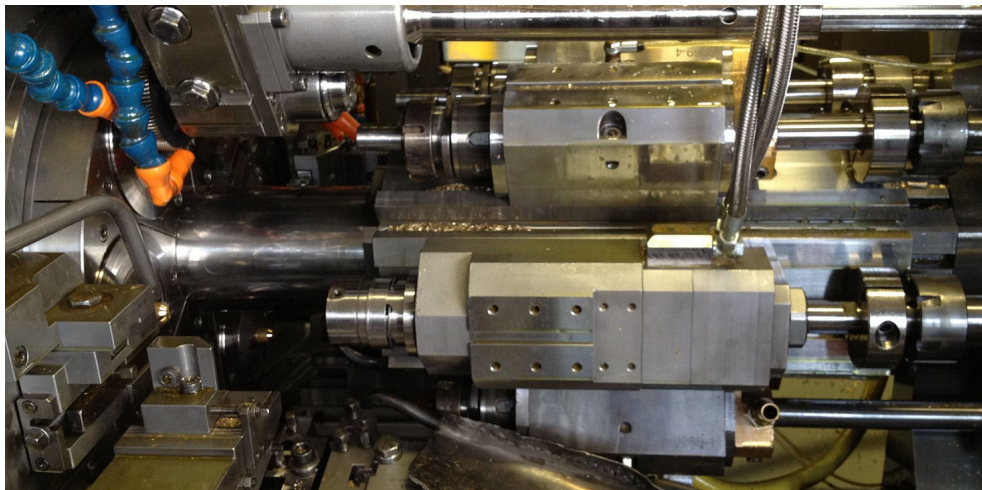
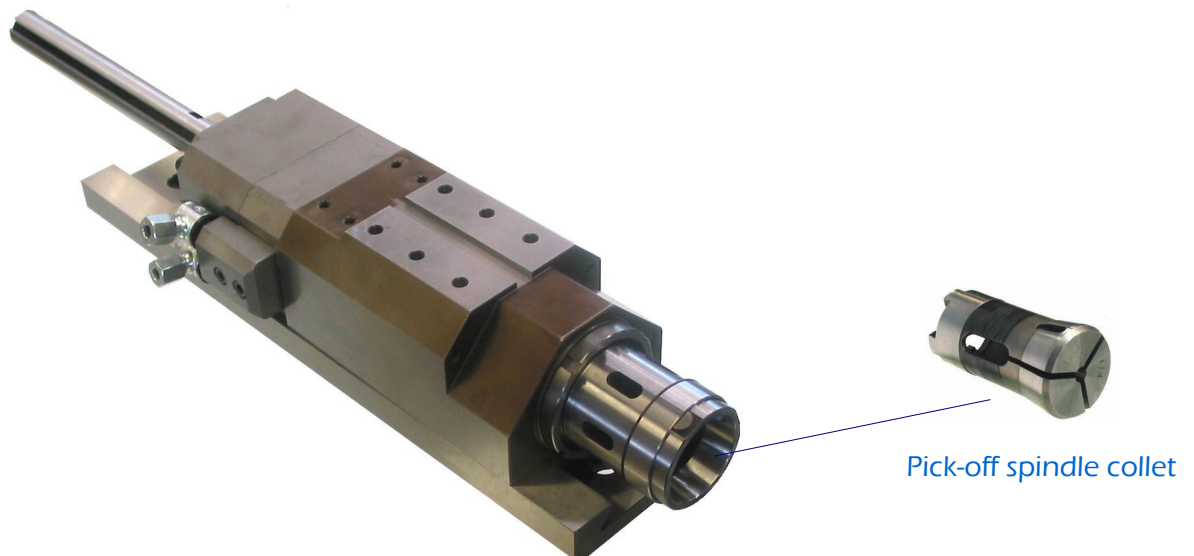
GITAL **GILDEMEISTER GM32 GM35 GM42**

Attachments and spare parts
Appareils et pièces d'étachées
Ersatzteile und Einrichtungen
Dispositivos y Repuestos

Edizione catalogo / Catalogue issue: 09/2017

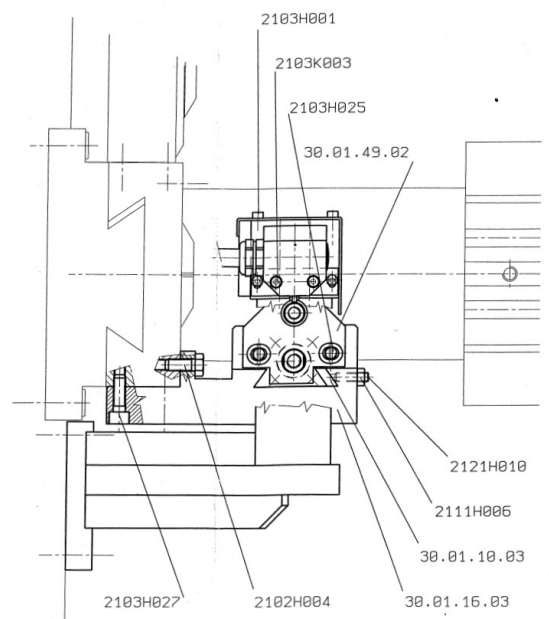
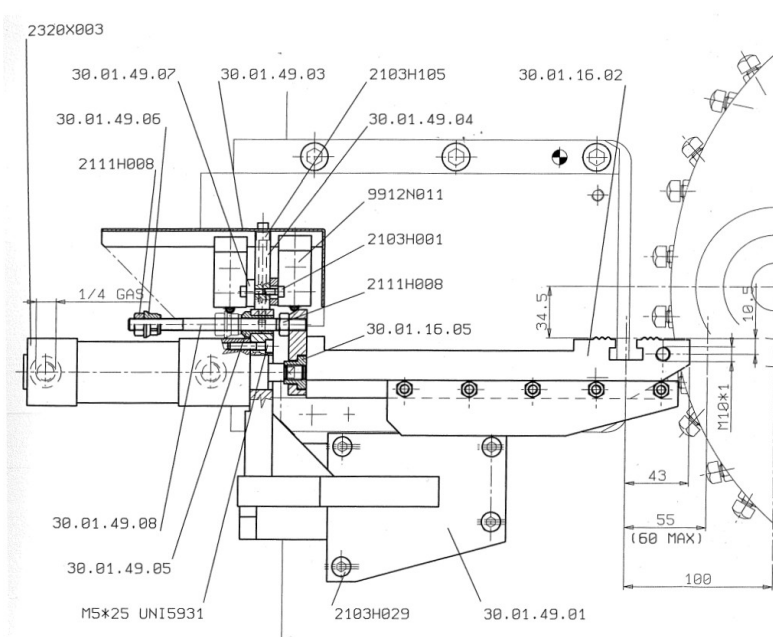
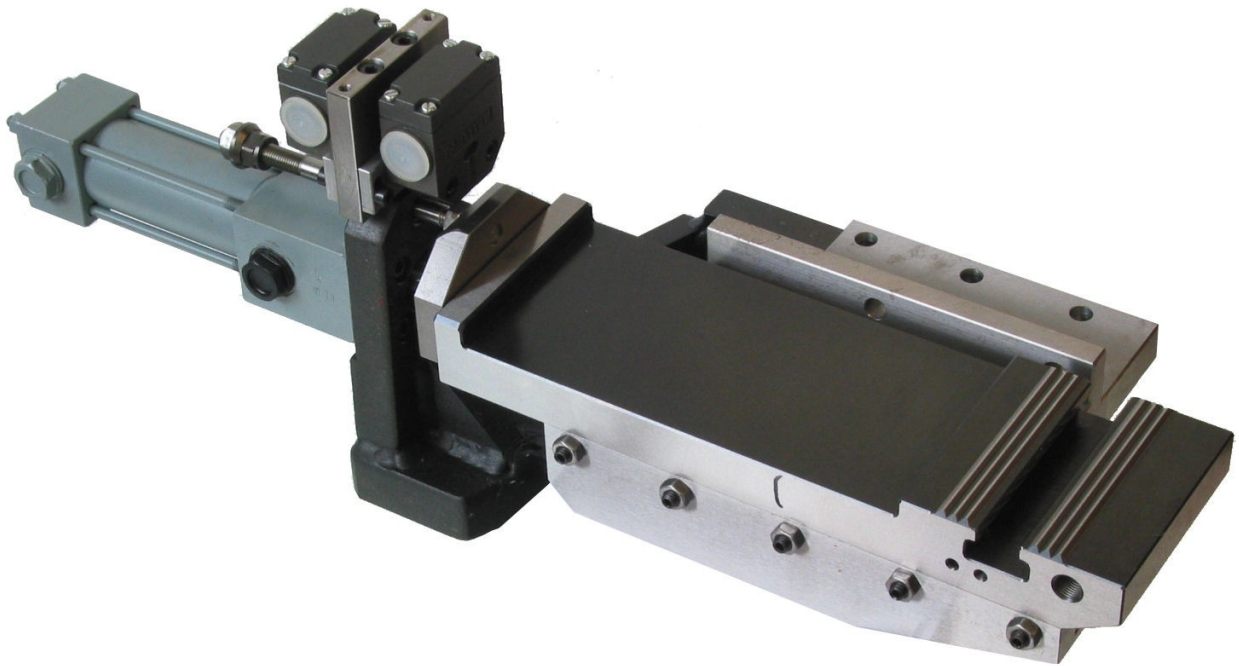
**Tutti gli articoli meccanici sono di produzione della TURLO S.r.l.
All the mechanical parts in this catalogue are made by TURLO S.r.l.**

49.58.003 POS.6 HYDRAULIC PICK-UP ATTACHMENT
ABGREIFSPINDELEINRICHTUNG POS.6
BROCHE DE REPRISE POS.6
MANDRIL DE REPASAR POS.6

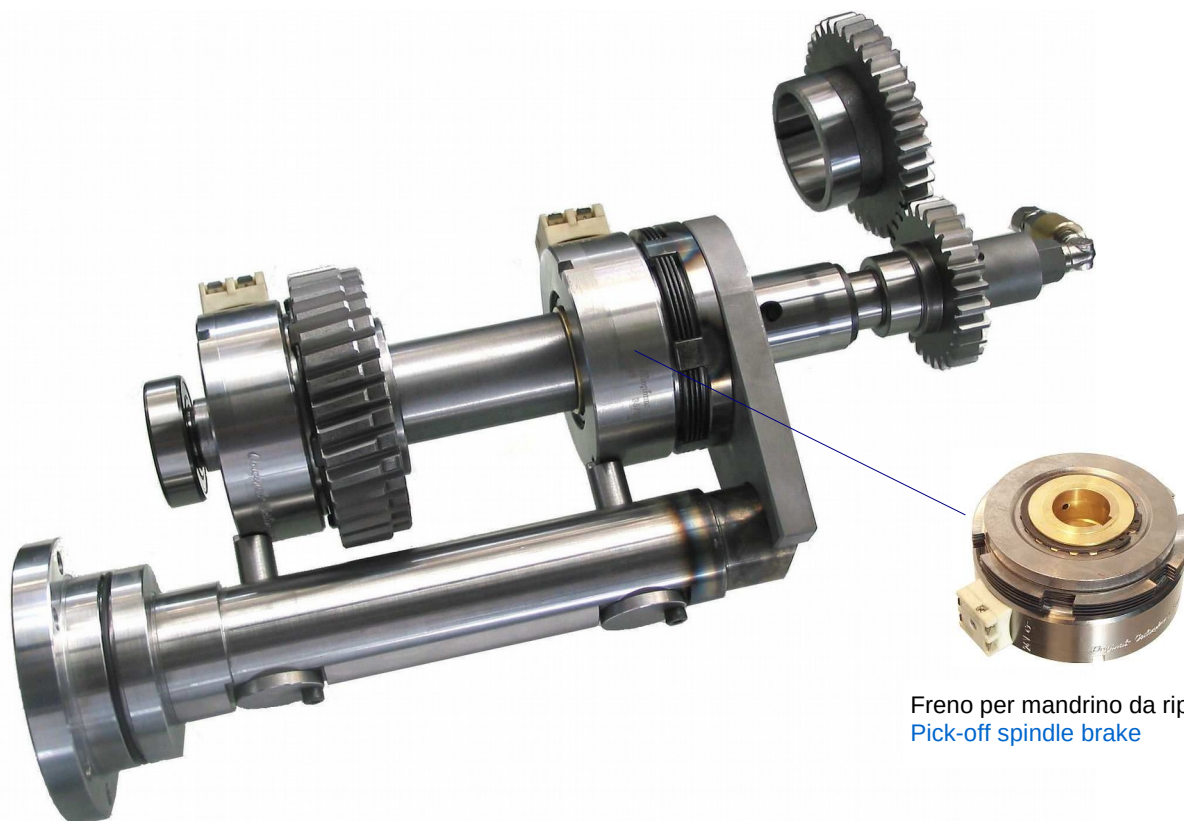


The pick-up attachment is used on cutting-off position frontal slide.
Its spindle rotates at the same speed than the bar, it clamps the part with the collet during the cutting-off.
Still with the part in the collet, it goes backward, allowing the positioning of the reprise tool-holder in front.
Going forward against the reprise tool it makes the finishing of the part on the back side.
The last phase is the opening of the collet and the expulsion of the part.
The opening and closing of the collet is fully hydraulic.
We can supply the hydraulic unit in case it is missing in the machine.
We can supply new complete attachments or spare parts for your original attachments
or we can rebuild your old attachments

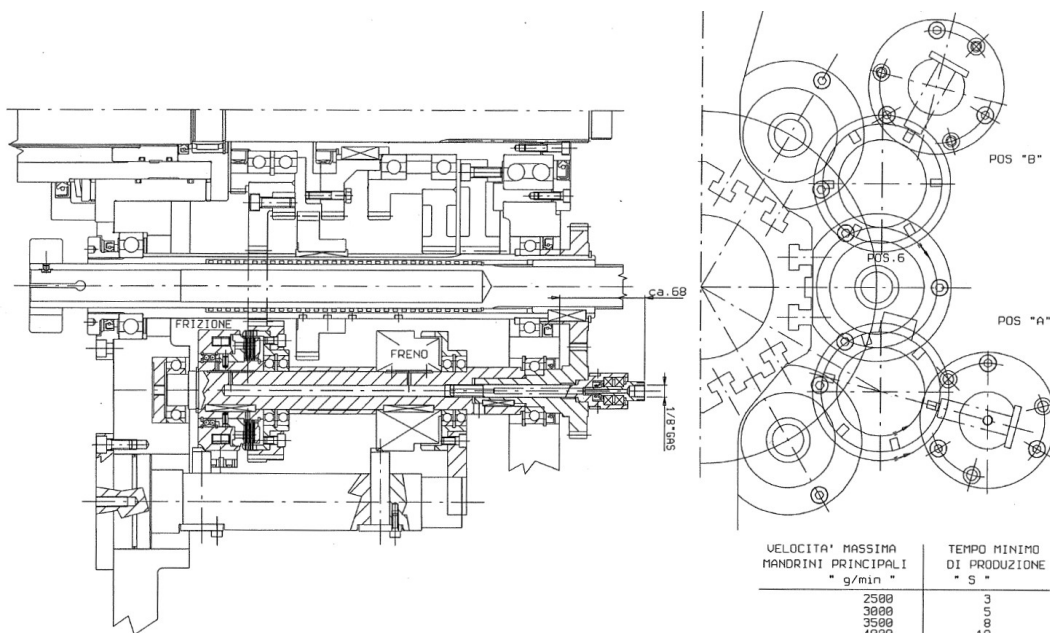
49.79.005 POS.6 ADDITIONAL CROSS SLIDE for rear machining
ZUSÄTZLICH SCHLITTEN POS.6
CHARIOT POUR USINAGE ARRIERE POS.6
CORREDERA SUPPLEMENTARIO POS.6



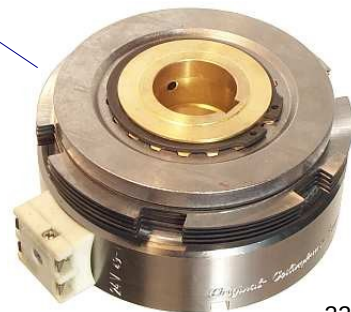
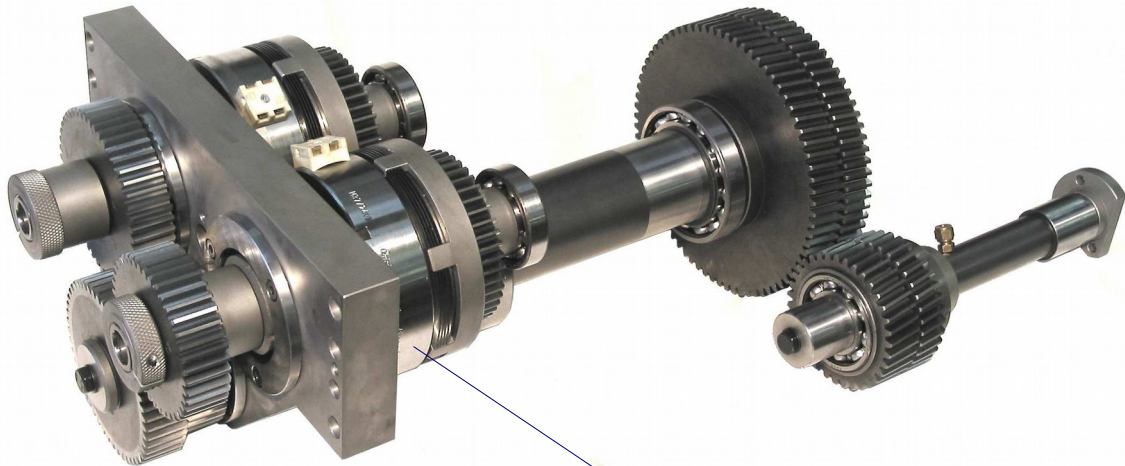
37.58.004 POS.6 PICK-UP SPINDLE STOPPING ATTACHMENT
STILLSETZEINRICHTUNG FUER ABGREIFEINRICHTUNG POS.6
DISPOSITIF D'ARRÊTAGE DE BROCHE DE REPRISE POS.6
RETÉN PARA MANDRIL DE REPASAR POS.6



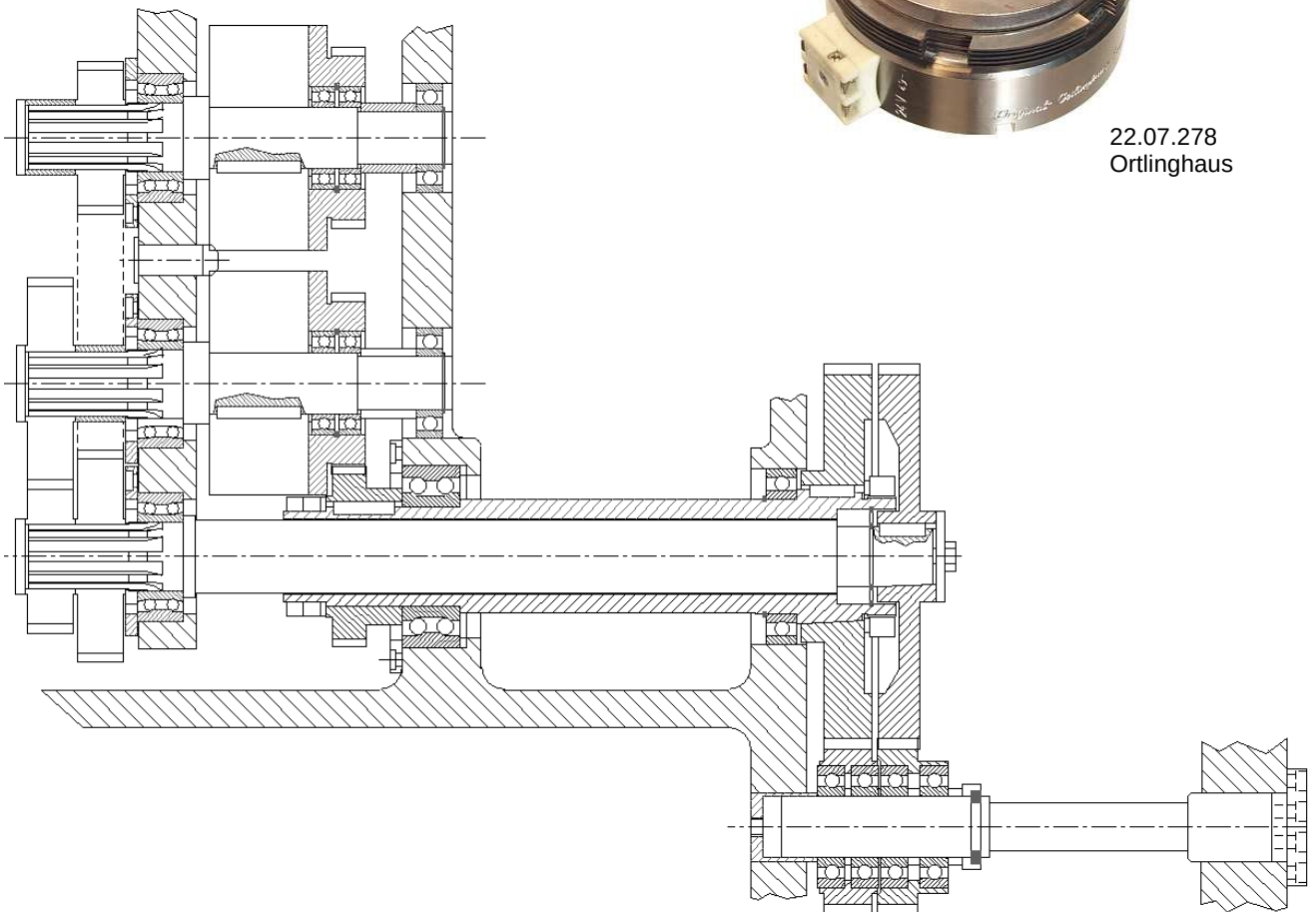
Freno per mandrino da ripresa
Pick-off spindle brake



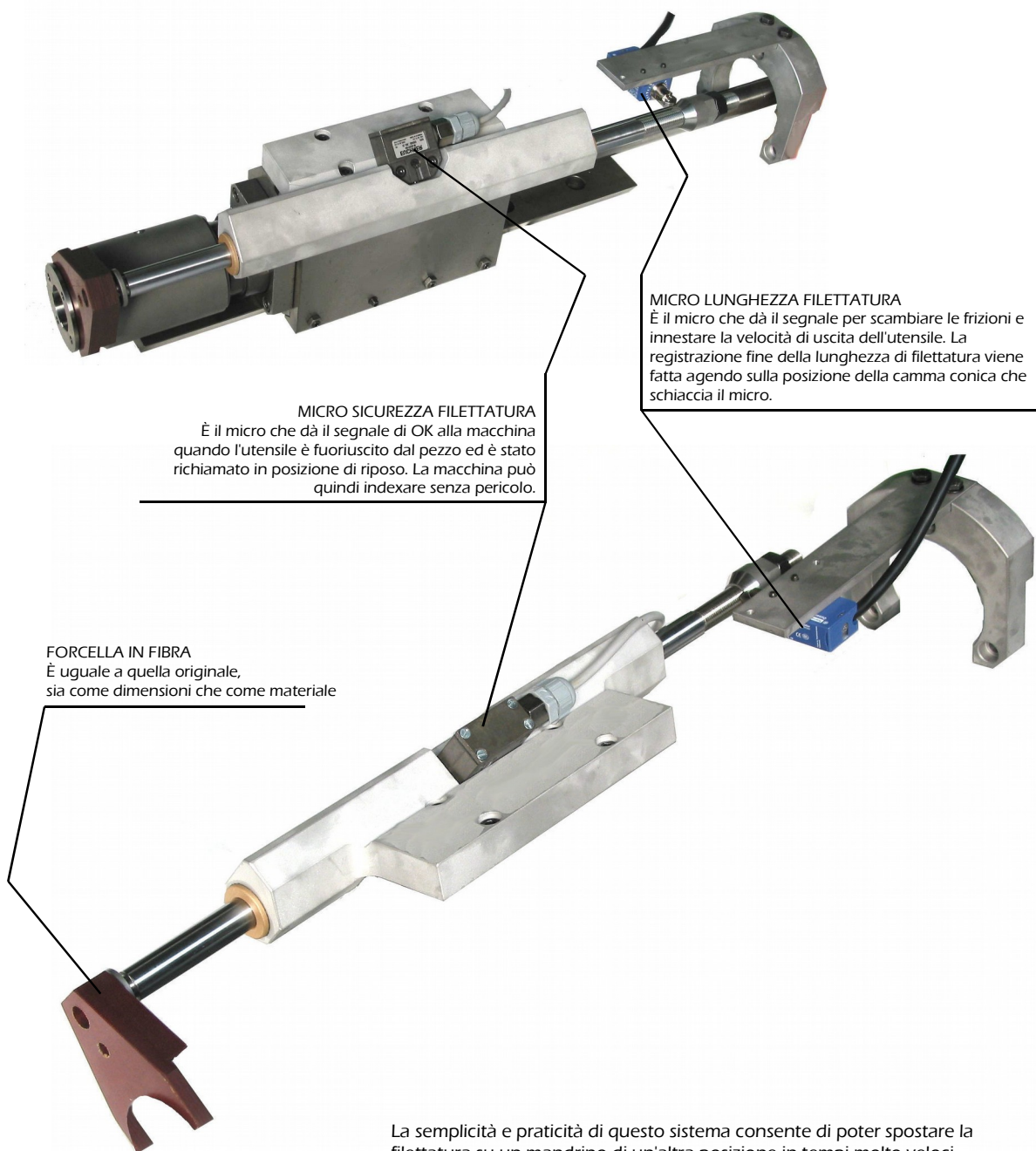
37.23.004 THREADING CLUTCH ASSEMBLY



22.07.278
Ortlinghaus



SIMPLIFIED THREADING CONTROL
SISTEMA DI CONTROLLO DI FILETTATURA



MICRO SICUREZZA FILETTATURA
È il micro che dà il segnale di OK alla macchina quando l'utensile è fuoriuscito dal pezzo ed è stato richiamato in posizione di riposo. La macchina può quindi indexare senza pericolo.

MICRO LUNGHEZZA FILETTATURA
È il micro che dà il segnale per scambiare le frizioni e innestare la velocità di uscita dell'utensile. La registrazione fine della lunghezza di filettatura viene fatta agendo sulla posizione della camma conica che schiaccia il micro.

FORCELLA IN FIBRA
È uguale a quella originale, sia come dimensioni che come materiale

La semplicità e praticità di questo sistema consente di poter spostare la filettatura su un mandrino di un'altra posizione in tempi molto veloci

**ORIGINAL-LIKE THREADING CONTROL SET
CONTROLLO FILETTATURA COME L'ORIGINALE**



37.36.007
GRUPPO PORTAMASCHIO A SFILAMENTO
TAP-HOLDER WITH EXTRACTION



75.03.34
FORCELLA IN FIBRA (06.10.09.01)
FIBER FORK



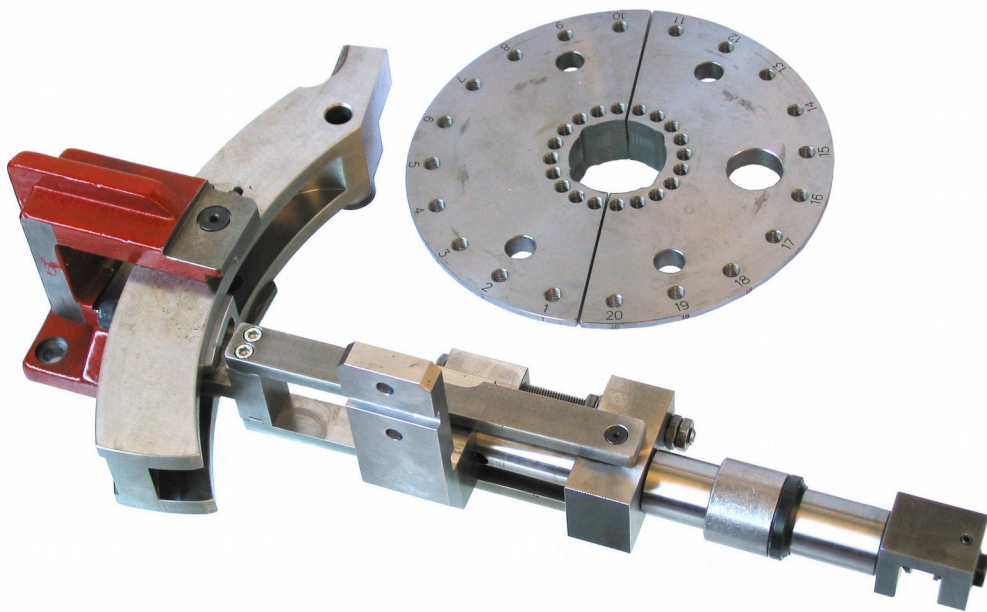
**CONVERTITORE PER PINZA ER32
ER32 COLLET HOLDER**



05.74.93
OPTOACCOPIATORE

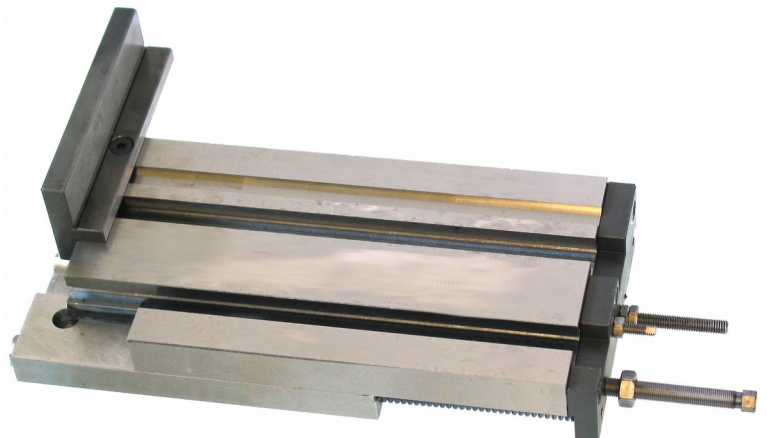
OPTIONAL ITEM:

**CONTROL AXIAL SLIDE
AXIALANTRIEB
MANDO AXIAL**

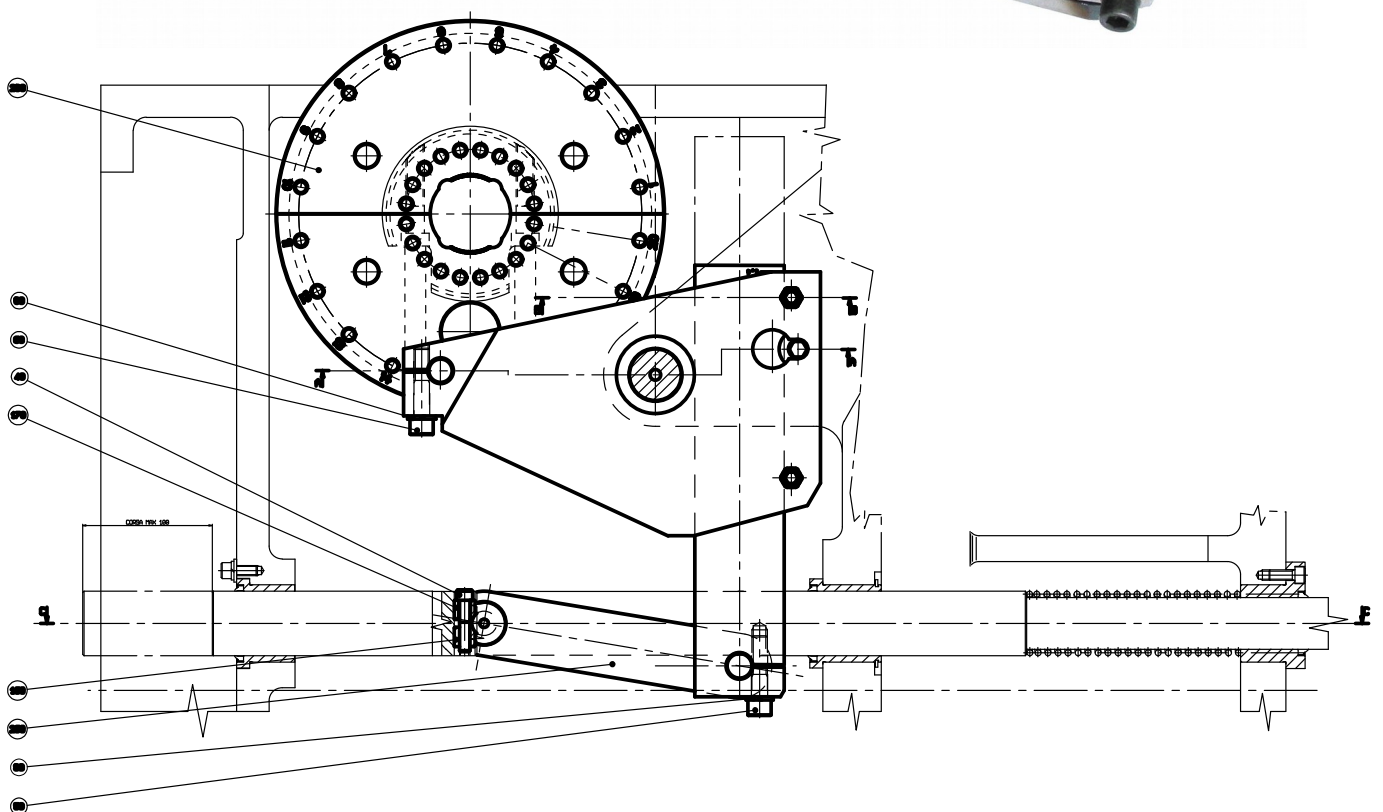
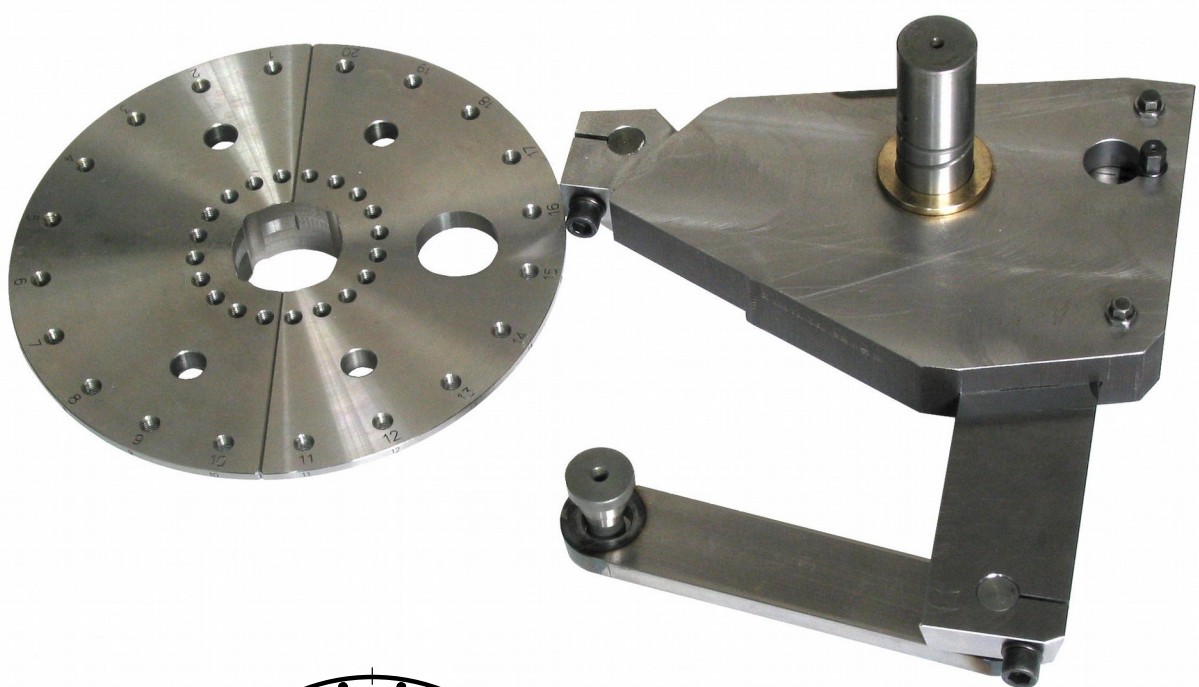
**OPTIONAL ITEM:**

**AXIAL SLIDE WITH TEE SLOTS
AXIALSCHLITTEN MIT T-NUTEN
CARRO AXIAL CON RANURAS A T**

- 49.25.019 Pos.1**
- 49.25.020 Pos.2**
- 49.25.017 Pos.4**
- 49.25.018 Pos.5**



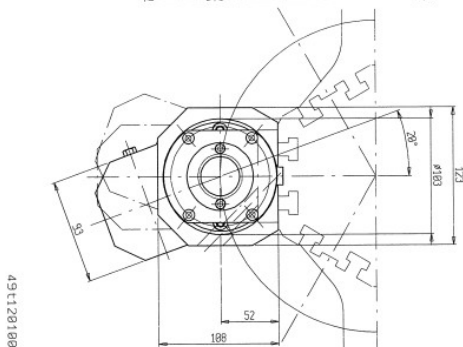
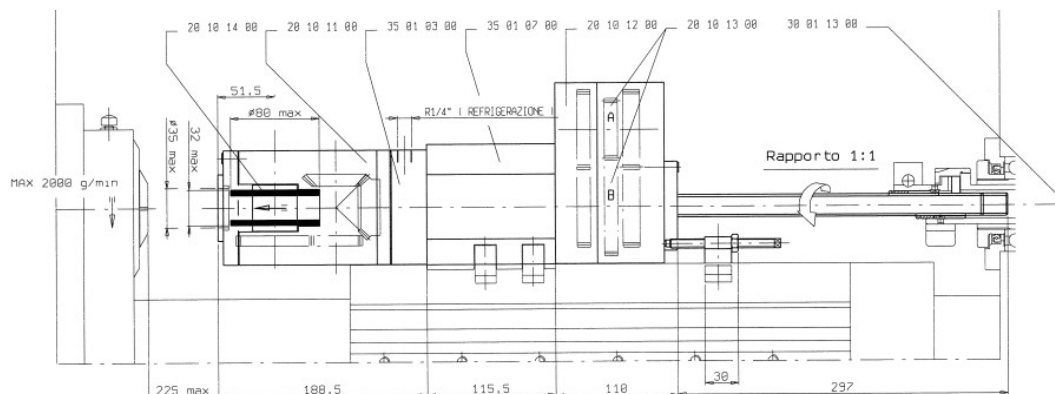
49.11.002
CENTRAL BLOCK INDEPENDENT MOVEMENT (by cam)
FÜHRUNGSBLOCKSTEUERUNG
COMMANDE BLOC CENTRALE
MANDO BLOQUE CENTRAL



37.55.001 FRONTAL MILLING ATTACHMENT FRESATORE FRONTALE FRONTAL FRAESEINRICHTUNG APPAREIL A FRAISER FRONTAL

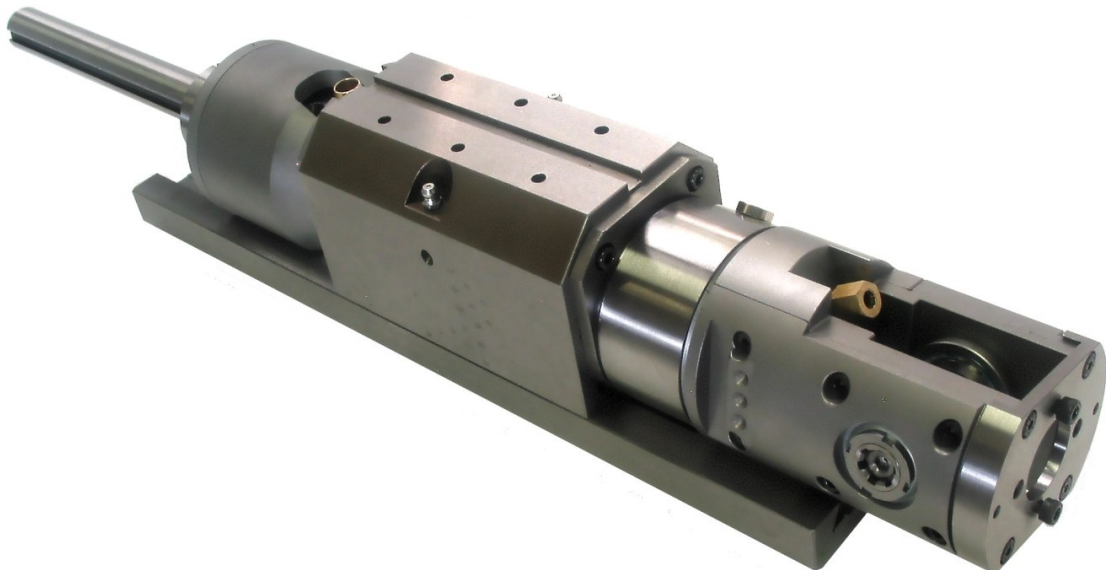


Max machine speed = 2000rpm
 Max dia. For the milling disk = 80mm
 Max distance between 2 milling disks (ext side to ext side) = 33,5mm
 Tool rotation speed can be changed by replacing ratio gears in the back box
 Please note: this kind of attachment must be fixed to the centre block,
 therefore the machine must be equipped with the cam to move the centre block



| RUOTE INTERCAMBIABILI 20 10 13 00 | | | | |
|-----------------------------------|-----|-------------------------|-----|----------------------------|
| N° DISEGNO RUOTA "A" | Z A | N° DISEGNO RUOTA "B" | Z B | RAPPORTO MANDRINO/FRESA |
| 20 10 13 01 | 25 | 20 10 13 18 | 44 | 1 : 3.74 |
| 20 10 13 02 | 26 | 20 10 13 17 | 43 | 1 : 4.11 |
| 20 10 13 03 | 27 | 20 10 13 16 | 42 | 1 : 4.60 |
| 20 10 13 04 | 28 | 20 10 13 15 | 41 | 1 : 5.23 |
| 20 10 13 05 | 29 | 20 10 13 14 | 40 | 1 : 6.13 |
| 20 10 13 06 | 30 | 20 10 13 13 | 39 | 1 : 7.46 |
| 20 10 13 07 | 31 | 20 10 13 12 | 38 | 1 : 9.70 |
| 20 10 13 08 | 32 | 20 10 13 11 | 37 | 1 : 14.08 |

We can supply the complete new attachment, based on GR3 Saco model.
 Every single part is interchangeable with original ones,
 and that allows us to repair old original units with our spare parts.

**G7S-G1 FRONTAL MILLING ATTACHMENT
FRESATORE FRONTALE
FRONTAL FRAESEINRICHTUNG
APPAREIL A FRAISER FRONTAL**

Massimi giri macchina = 3000

Max machine speed = 3000rpm

Massimo diametro per fresa a disco = 70mm

Max dia. for the milling disk = 70mm

Massimo diametro di barra fresabile = 23,5mm

Max distance between 2 milling disks (ext side to ext side) = 23,5mm

Attenzione: questo tipo di fresatore scorre su una coulisse fissabile all'esagono centrale, pertanto l'esagono centrale può rimanere fermo durante la fresatura

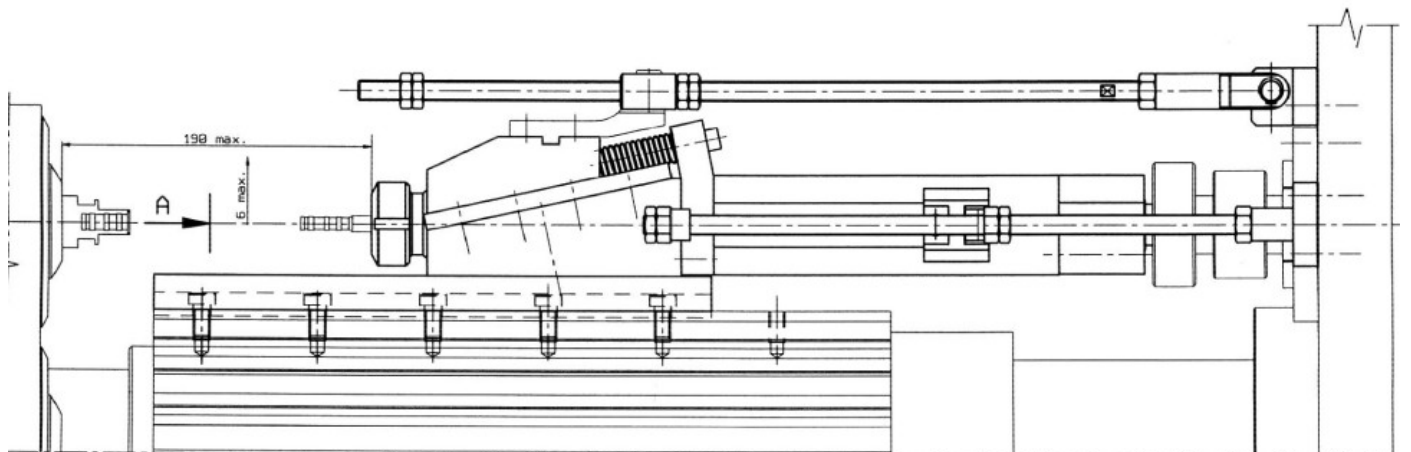
Remark: this kind of attachment can slide on a base fixed to the centre block,

therefore you don't need the machine to be equipped with the cam to move the centre block

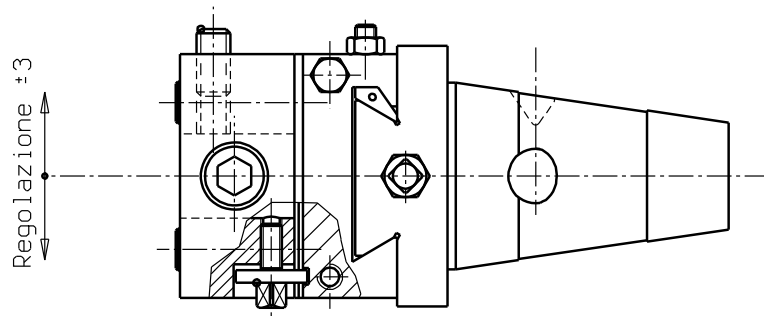
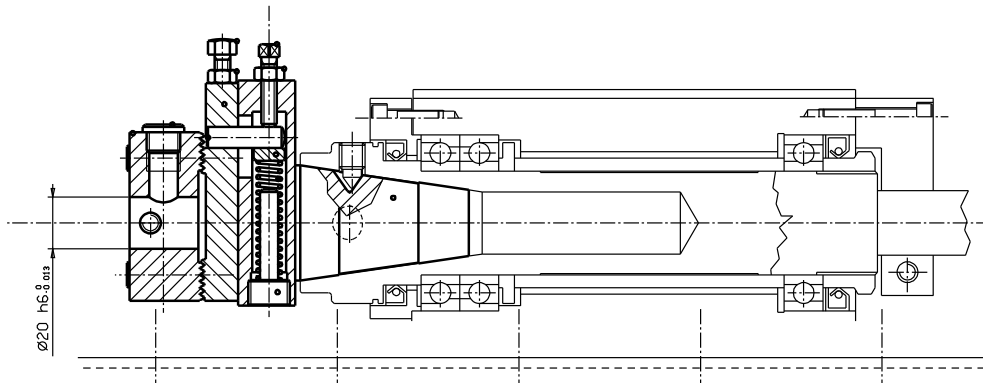


**GILDEMEISTER
GM32 GM35 GM42**

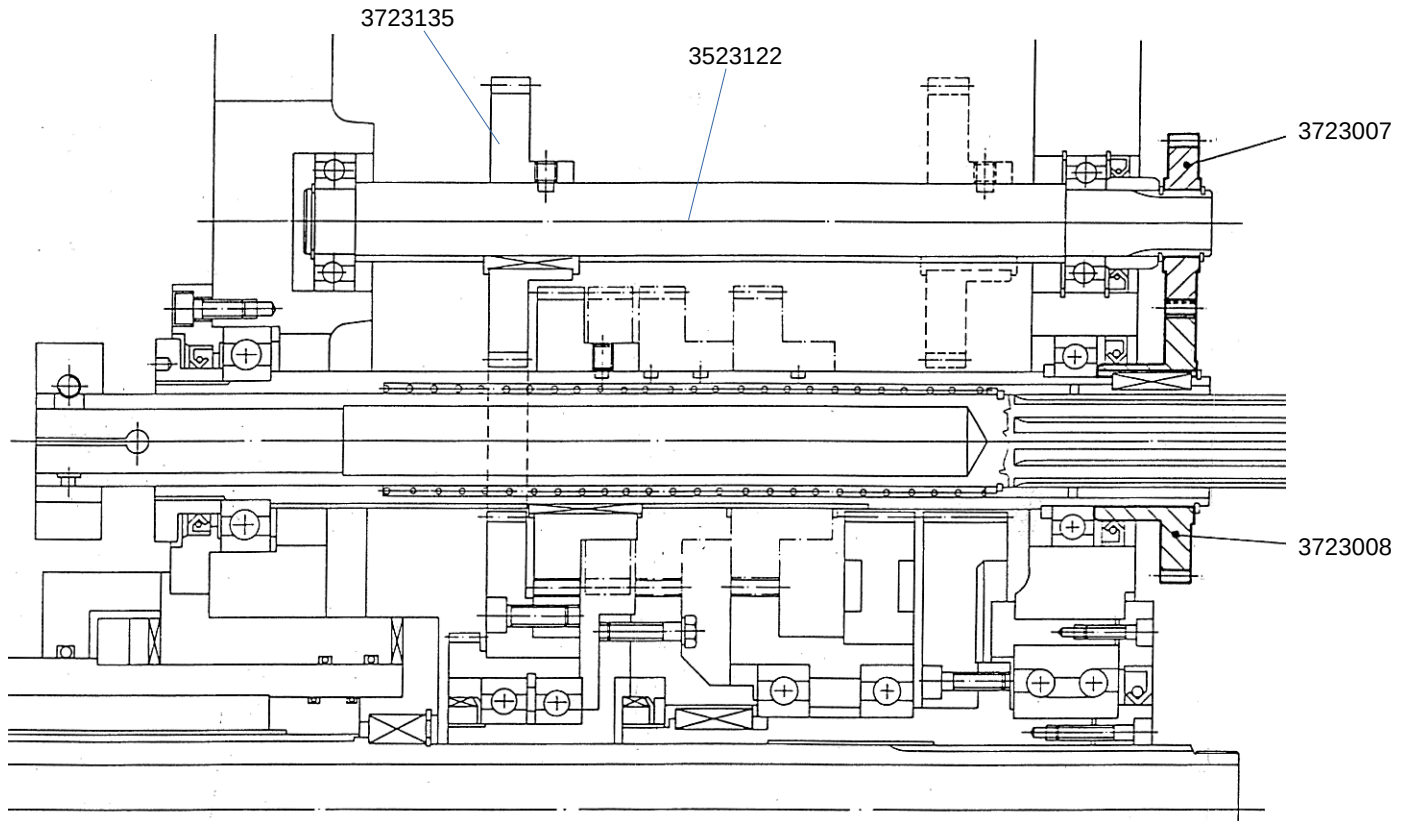
**ROTARY RECESSING ATTACHMENT
RECESSITORE ROTANTE**



RECESSING HEAD
TESTINA PER RECESSI



**OPTIONAL ITEM:
RATIO GEARS FOR HIGH SPEED DRILLING AND BORING**

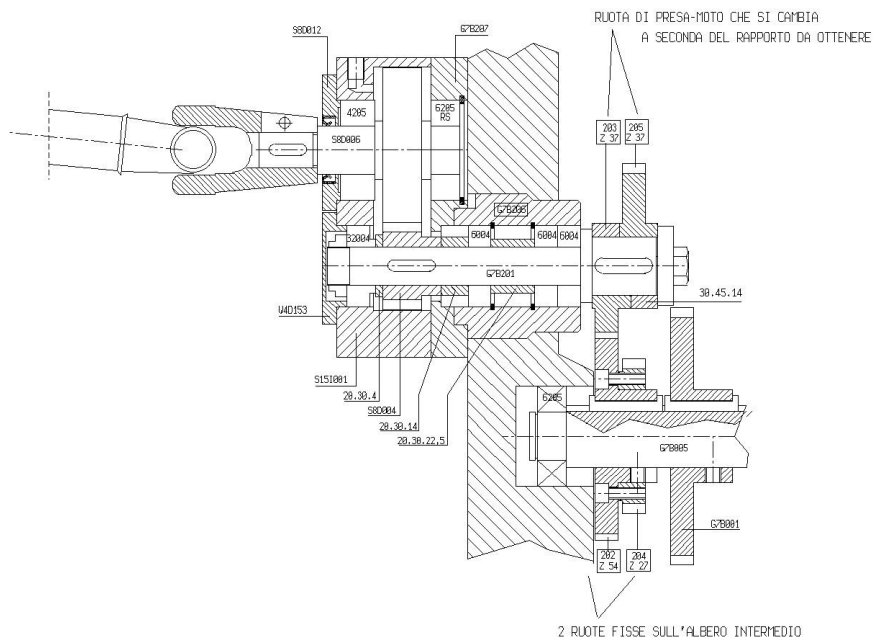


| 3723007 | Z1 | Z2 | 3723008 |
|----------------|-----------|-----------|----------------|
| 3723118 | 17 | 49 | 3723133 |
| 3723119 | 20 | 46 | 3723132 |
| 3723120 | 22 | 44 | 3723131 |
| 3723121 | 24 | 42 | 3723130 |
| 3723122 | 25 | 41 | 3723129 |
| 3723123 | 35 | 31 | 3723128 |
| 3723124 | 37 | 29 | 3723127 |
| 3723125 | 39 | 27 | 3723126 |

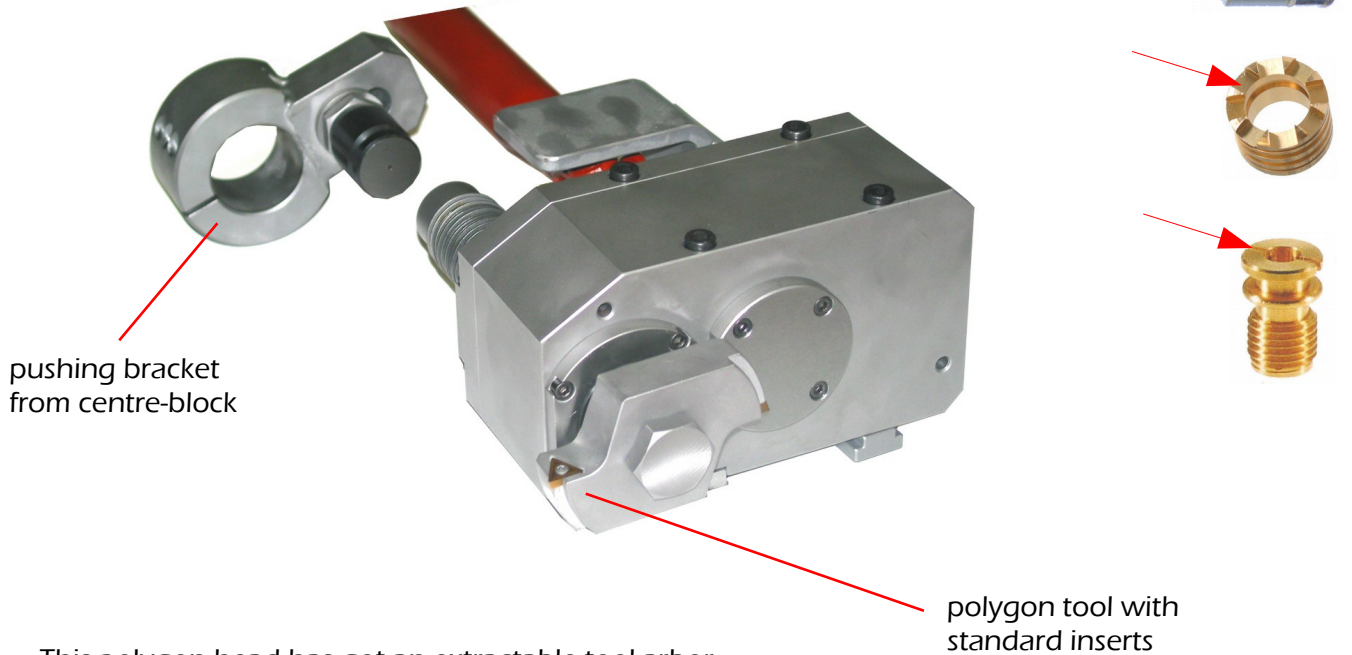
POLYGON-GENERATING AND THREAD-MILLING ATTACHMENT
MEHRKANTDREH UND GEWINDEFRASEINRICHTUNG
APPAREIL A POLYGER ET FRESAIR LES FILETS
POLIGONADOR Y FRESADOR DE ROSCAS



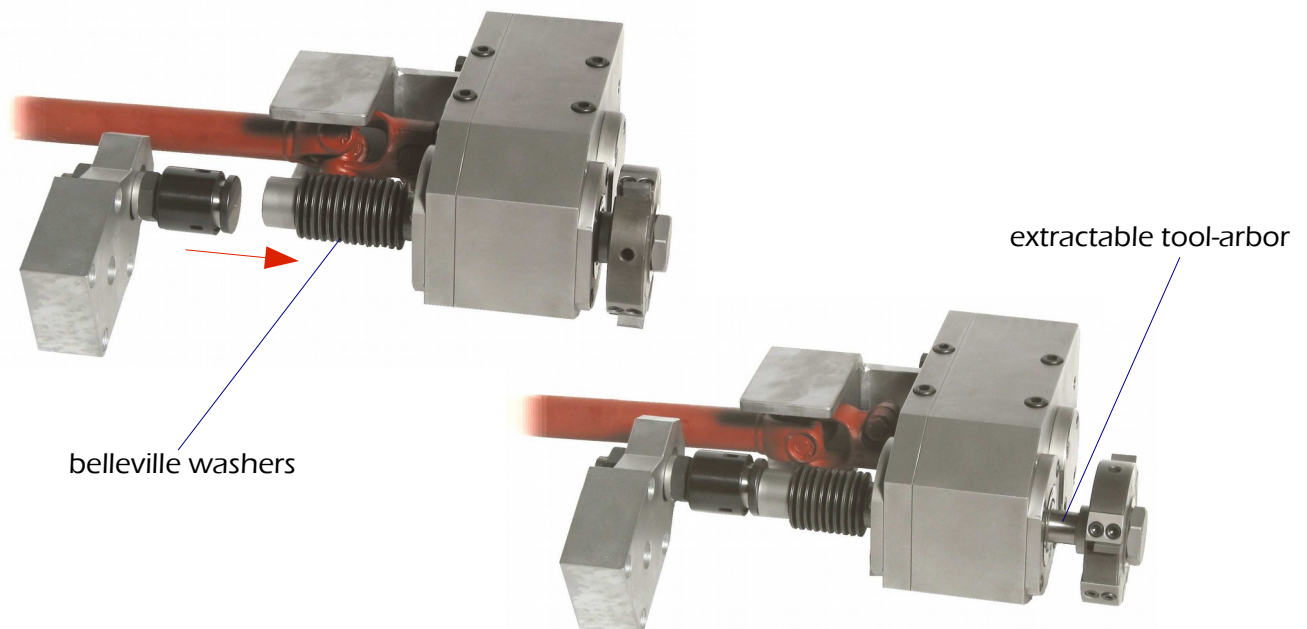
The distinctive feature of our attachment is that you can change the ratio from polygon-generating to thread-milling very easily. The 202 and 204 gears stay together on the intermediate shaft all the time. You can polygon by placing the 203 gear on the back of the attachment or you can do thread-milling using the 205 instead. That means you do not have to open any gear-box and change the two gears inside, therefore we can use conical bearings in the gear-box, that make it stronger and more precise.



POLYGON HEAD WITH AXIAL MOVEMENT OF THE TOOL FOR STEEL
TÊTE A POLIGONER AVEC MOUVEMENT AXIAL POUR ACIER
POLIGONADOR CON MOVIMIENTO AXIAL PARA ACERO
POLIGONADOR COM MOVIMENTO AXIAL PARA AÇO



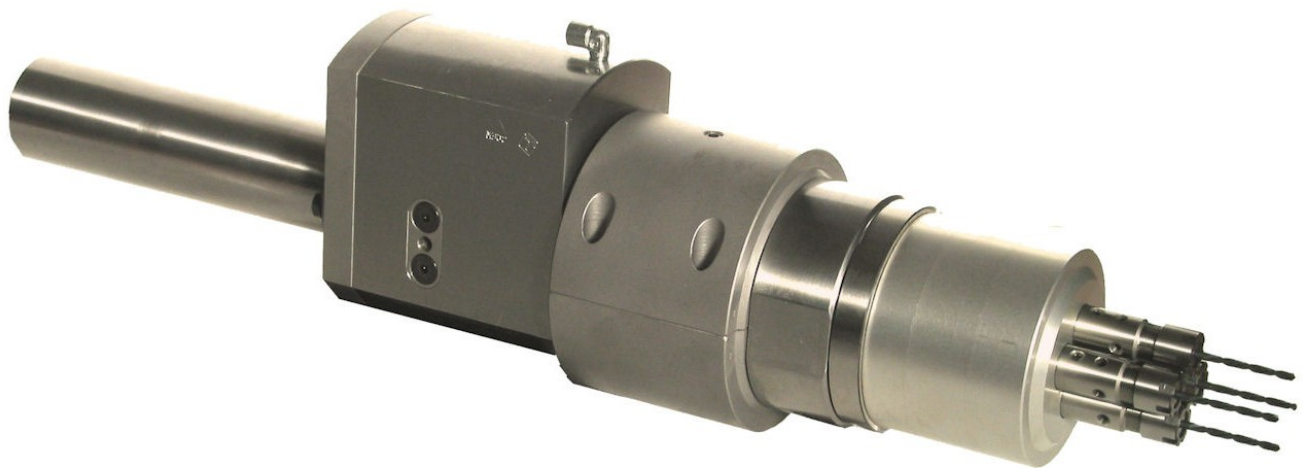
This polygon head has got an extractable tool-arbor. The tool-arbor back end is outside the head, so it can be pushed forward by a bracket fixed on the centre block in the same station. A set of belleville washers will pull the arbor into start position at the end of the cycle. This kind of attachment is very good for wide polygon jobs and even better for hard jobs on steel. In this cases we suggest to use special tools with standard inserts. Also this special polygon head is good to make frontal milled slot in the part without the radius of a milling disk. Please note that using this attachment can avoid to buy very expensive compound slides.





**GILDEMEISTER
GM32 GM35 GM42**

**SYNCHRO FRONTAL MULTI-DRILLING ATTACHMENT
APPARECCHIO FORATORE MULTIPLO SINCRONIZZATO
FORADOR MÚLTIPLOS SINCRONIZADO**

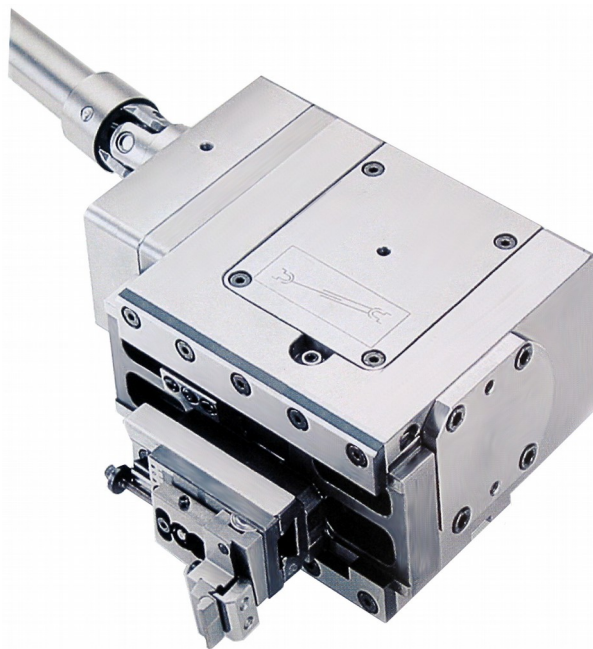


This multi-driller in particular is designed to make 4 drilled holes on a specific interaxis, we can supply it for a special spindle-stopping machine, but also for standard machines.

For standard machines the multi-driller head rotates at the same speed than the bar.

The multi-driller heads are customized for the kind of component you are going to produce.

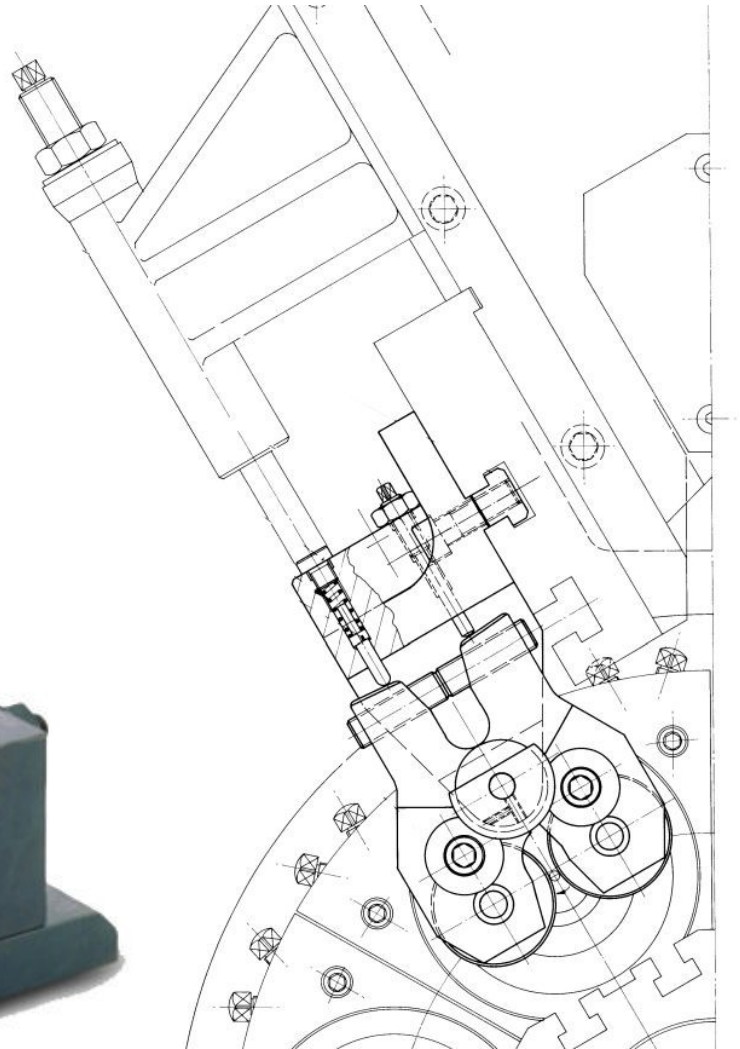
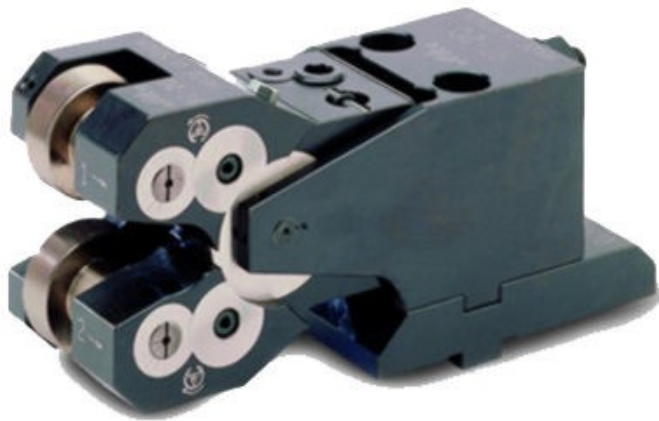
THREAD CHASING ATTACHMENT
APPARECCHIO PETTINATORE
GEWINDESTREHLER
APPAREIL À PEIGNER LES FILETS
ROSQUEADOR POR PENTES



THREAD CHASING ATTACHMENT

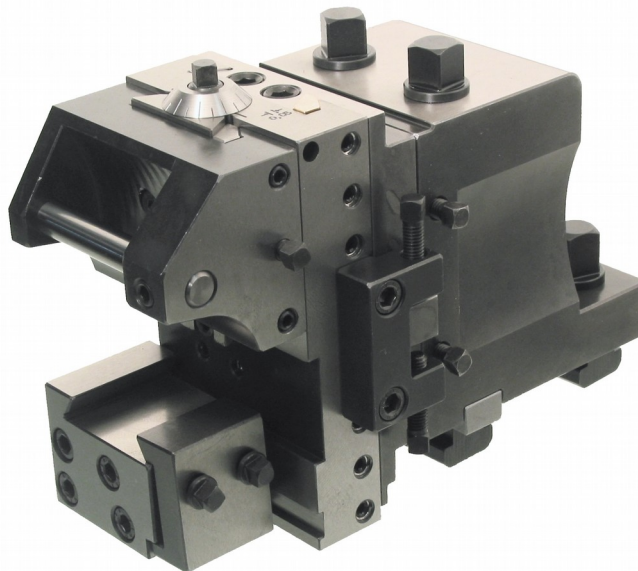
Attachment for multispindle automatics with mechanic motion used for threading pieces on diameters which usually can't be reached by a normal die. This attachment is a valid alternative to thread rolling and to milling devices. With suitable variants, internal threads can be obtained in addition to external

**THREAD ROLLING ATTACHMENT
RULLATORE DI FILETTI TANGENZIALE**



We can supply new or good used cross thread-rolling Fette heads,
Good models for GM35/GM42 machines are the T18 and T27

Siamo in grado di fornire rullatori di filetti tangenziali Fette nuovi o usati.
I modelli utilizzati su GM32/GM42 sono T18 e T27

75.11.003**SHAVING TOOL-HOLDER
KALIBRIERWERKZEUGE
PORTE OUTILS Á CALIBRER
CALBRADOR/AFEITADOR**

The shaving tool-holder is used to have very precise diameter.

It can be used on any cross-slides. It must be completed by the customer by a roller on

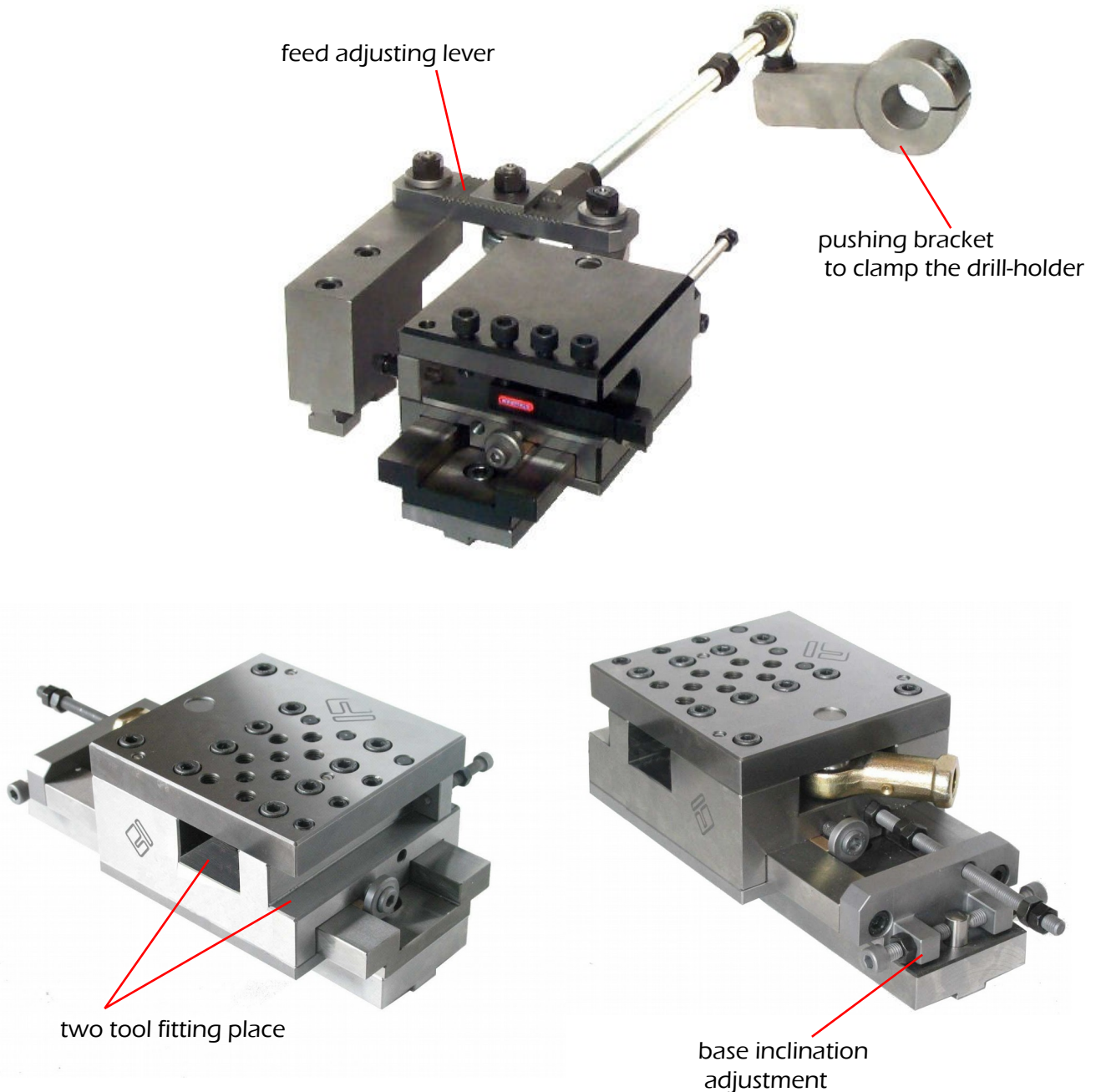
The top carbide pin and a cutting insert clamped at the bottom.

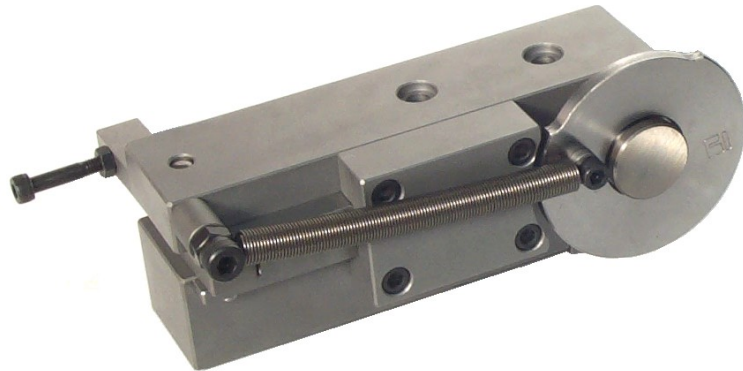
Remark:

the spares of our GR.3 shave tool-holder are interchangeable
with the ones of the SACO GR.3 original one

**LONGITUDINAL TURNING CHARIOT
AXIALSCHLITTEN LANGDREHSCHIEBER
CHARIOT POUR LONG TOURNAGE
CARRO PARA TORNEAMENTO LONGO**

The axial chariot can be used on machine cross slides to make long turning operations. The feed is taken by fitting a pushing bracket on the centre block (same station). The bracket can be fixed directly on the centre block or it can clamp the drill holder back end. The inclination of the bottom base is adjustable. The chariot has the same feed than the centre block unless you prefer the version with adjustable feed lever.



**CROSS MARKING ATTACHMENT
SIGNIEREINRICHTUNG
MARQUAGE TANGENTIEL
MARCADORES**

This attachment is used to mark the components in a very simple and quick way, it is based on a completely mechanical logic.

With our attachment on, the cross slide moves forward till the engraved disk hits the component. Because of the friction between them, the disk starts to turn and mark the component. After one rotation engraving is over and a locking pin stops the disk in a special position, where it cannot touch the component again.

When cross slide returns back, a proper pin, fixed on the wall of the machine, unlocks the disk, and the spring takes it to its start position.

We can supply blank disks or engraved disk, following customer's requirements.

The same attachment can be taken apart and re-assembled the other way round in order to fit all station of the machine.

Now it is also possible to fit a disk with interchangeable letters.



The new roller with interchangeable characters



FEED, SPEED AND THREAD RATIO GEARS

| | Z1 | Z2 | |
|---------|-----------|-----------|---------|
| 3510200 | 23 | 68 | 3510227 |
| 3510201 | 24 | 67 | 3510226 |
| 3510202 | 25 | 66 | 3510225 |
| 3510203 | 26 | 65 | 3510224 |
| 3510204 | 29 | 62 | 3510223 |
| 3510205 | 30 | 61 | 3510222 |
| 3510206 | 31 | 60 | 3510221 |
| 3510207 | 32 | 59 | 3510220 |
| 3510208 | 33 | 58 | 3510219 |
| 3510209 | 35 | 56 | 3510218 |
| 3510210 | 37 | 54 | 3510217 |
| 3510211 | 39 | 52 | 3510216 |
| 3510212 | 41 | 50 | 3610215 |
| 3510213 | 43 | 48 | 3510214 |



STANDARD CAMS FOR TOOL-SPINDLES

STANDARD CAMS FOR CROSS SLIDES

37.29.109
 37.29.108
 37.29.107
 37.29.106
 37.29.105
 37.29.104
 37.29.103
 37.29.102

STANDARD CAMS FOR AXIAL SLIDES POS. 1-2-4-5

37.32.102



GILDEMEISTER GM32 GM35



3501130



3501132



3501131



3501119



3501133

0502012



3501134



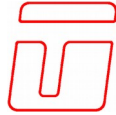
3501137



4901003
10.54.90
Ø125/Ø64/3,5



3501138



GILDEMEISTER GM32 GM35



3701230



3701233



3701127



3501148 collet tube - tubo stringibarra
3760114 for spindle stopping machine



3701231



3501145



3701146 tirante spingibarra GM35 - feed tube GM35
3501149 tirante spingibarra GM32 - feed tube GM32



48.01.142-1
collet
pinza stringibarra



3501109



3501108



3501110



37.01.148
chuck finger
pinza spingibarra
GM35 M39x1



4001113



4001109



4001111



4001159



4001129



4001162



4001125



4001120



4001125



40.01.143
collet
pinza stringibarra



40.01.136
chuck finger
pinza spingibarra

4901101

CROSS SLIDES



older type



newer type

AXIAL SLIDES



older type



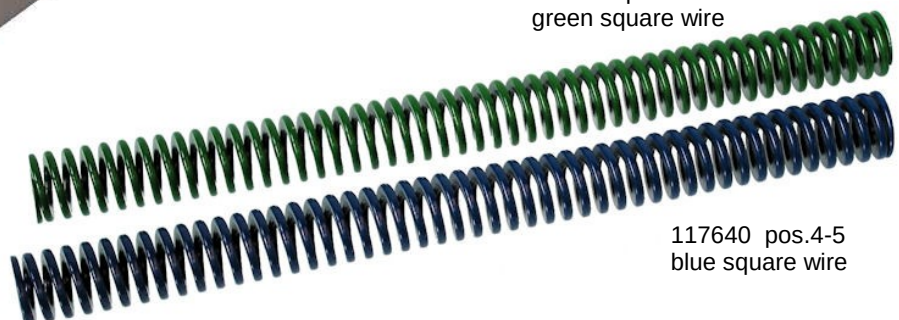
newer type



3507104



3707131
round wire



117580 pos.1-2-3-6
green square wire

117640 pos.4-5
blue square wire

**POS.1 CROSS SLIDE
POS.1 CARRO RADIALE**



SFG14



3707104



3707107



3507128



3707105



3507121



3707144



3507122



3507156



3707110



SFG14



3707144



3507128



3707104



3707116



3707105



3507122



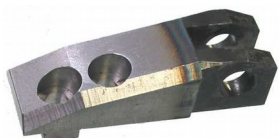
3507121

**POS.2 CROSS SLIDE
POS.2 CARRO RADIALE**



3507156

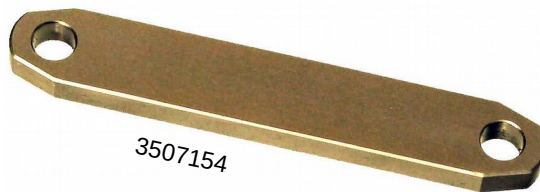
**POS.3 CROSS SLIDE
POS.3 CARRO RADIALE**



3507155

3507125

3507147

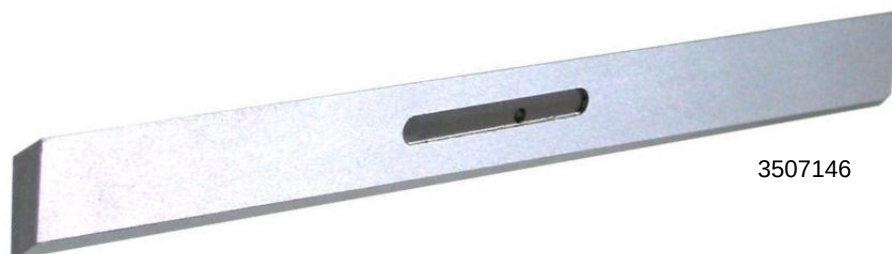


3507153

3507157



3507156



3507146



3707144



3717116



3717117



**GILDEMEISTER
GM32 GM35 GM42**

**POS.4 CROSS SLIDE
POS.4 CARRO RADIALE**



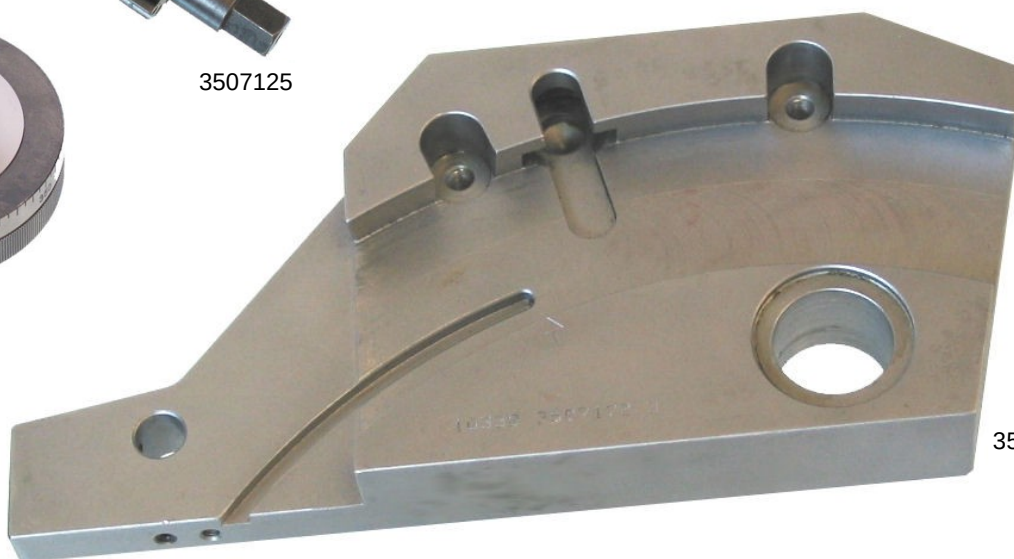
3507173



3507125



3707143



3507172



3507178



3507177



3507176



3507157



3707123



3507156



3507180



3507179

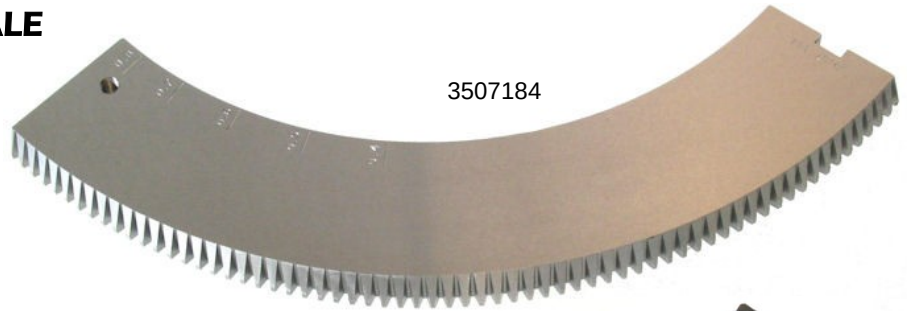


**GILDEMEISTER
GM32 GM35 GM42**

**POS.5 CROSS SLIDE
POS.5 CARRO RADIALE**



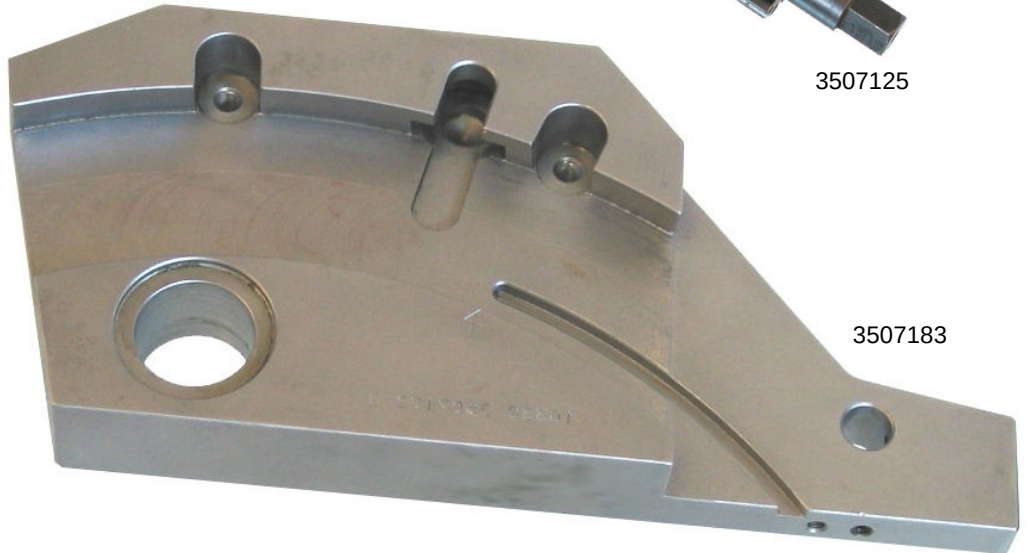
3707143



3507184



3507125



3507183



3507185



3507177



3507176



3507157



3707123



3507156



3507180



3507179

**POS.6 CROSS SLIDE
POS.6 CARRO RADIALE**





GILDEMEISTER GM32 GM35 GM42

FRONTAL SPINDLE DRIVING



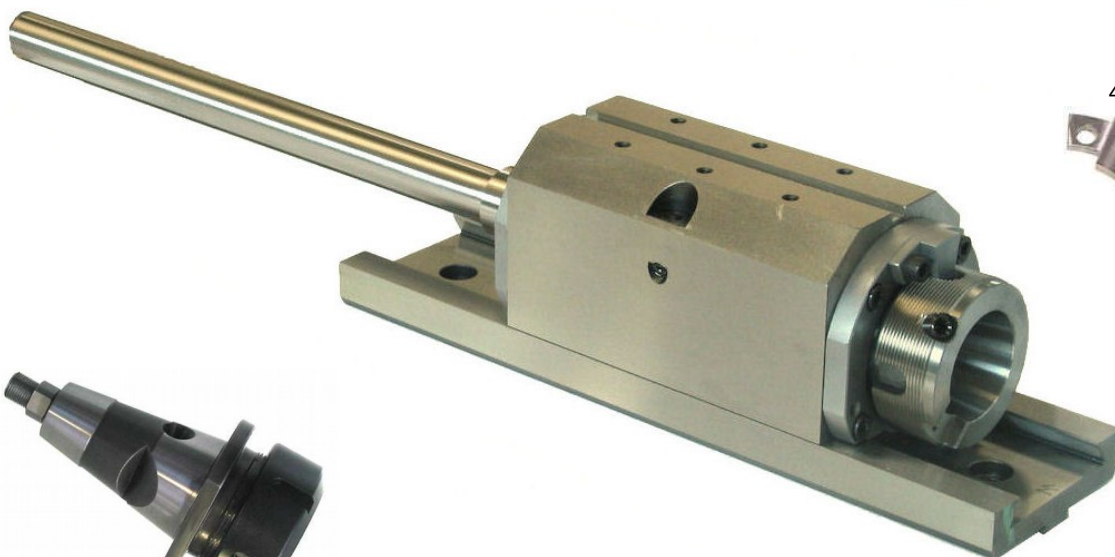


**GILDEMEISTER
GM32 GM35 GM42**

ROTATING DRILLING SPINDLES with or without inside coolant



3723044



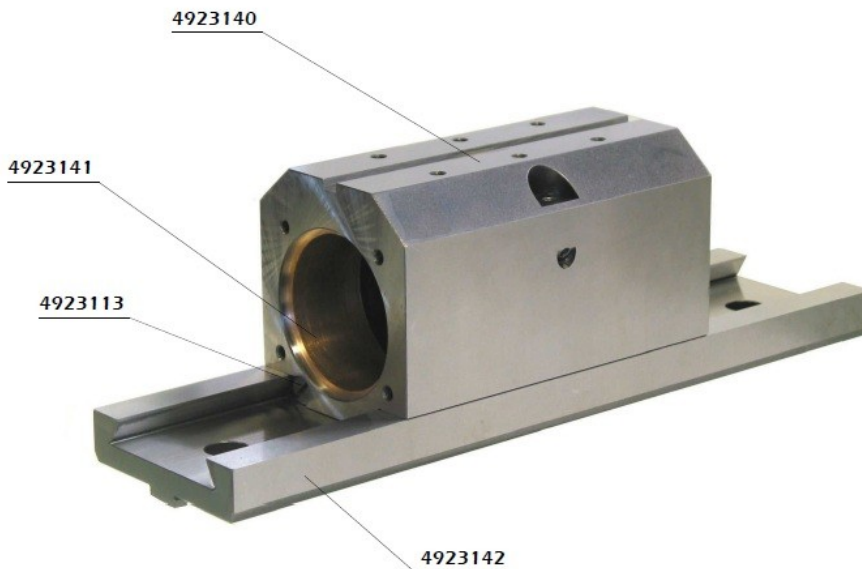
4923144



49.23.002-1



3723158

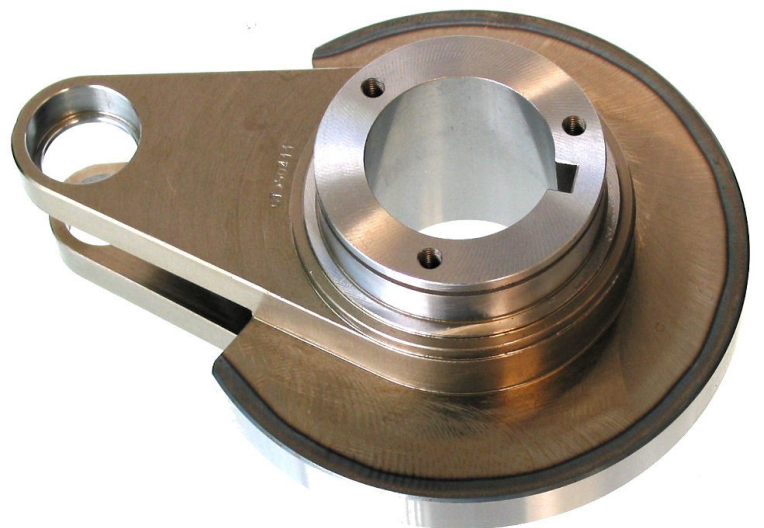
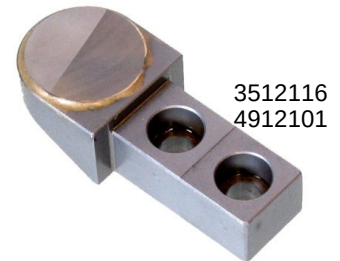
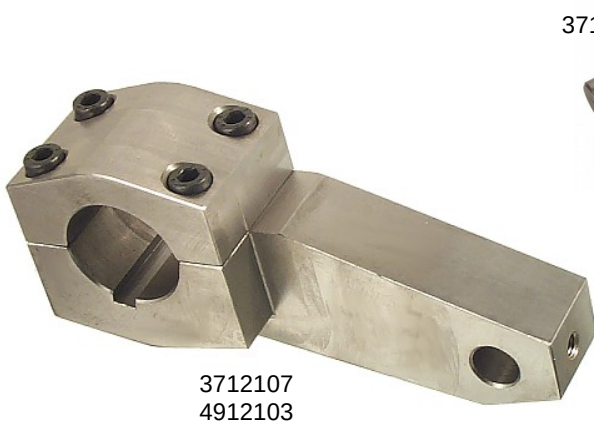


4923140

4923141

4923113

4923142





**GILDEMEISTER
GM32 GM35 GM42**

PARTS FOR SPINDLE STOPPING MACHINE

0-300-609-31-156-000
double mechanical clutch



4960176



3760241



3701135



3503107



1551301



1551303



**GILDEMEISTER
GM32 GM35 GM42**

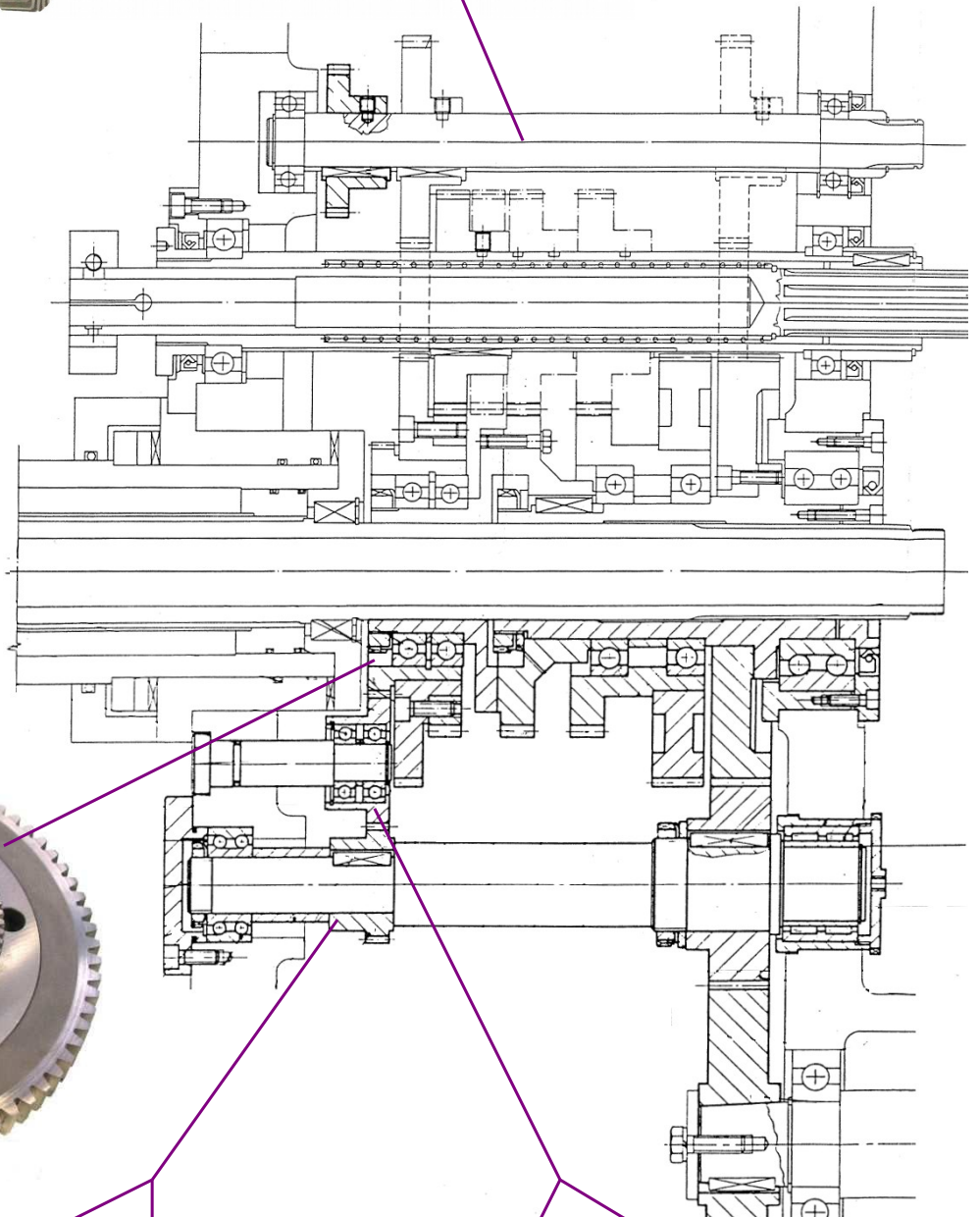
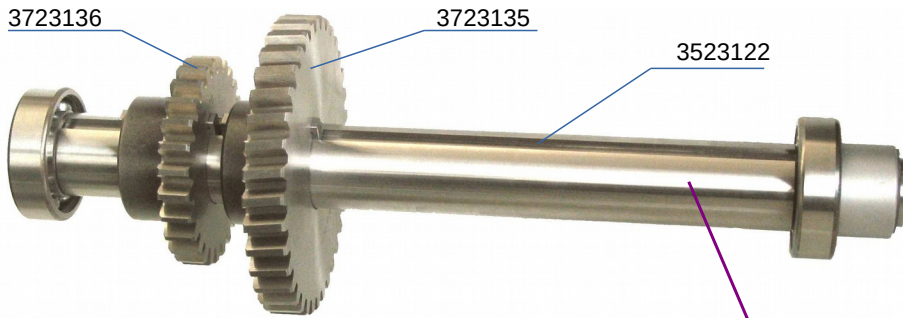


3706120





GILDEMEISTER GM32 GM35 GM42



3510180
vecchia versione
old model



4910158
nuova versione
new model



3510182
vecchia versione
old model



4910159
nuova versione
new model



GILDEMEISTER GM32 GM35 GM42



3501120



3702101



3502103

3502104



3730102



3730105



3712111

3712110



3511119



3711115



3711113

3711112



3722119



3714128



3722101

CLUTCH DISKS

